

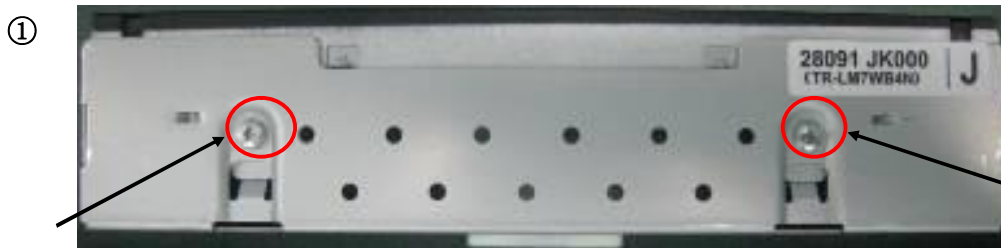
**Standard Operating Procedure(SOP)**

Process Flow Diagrams  
Mark "B": Special characteristics of the project

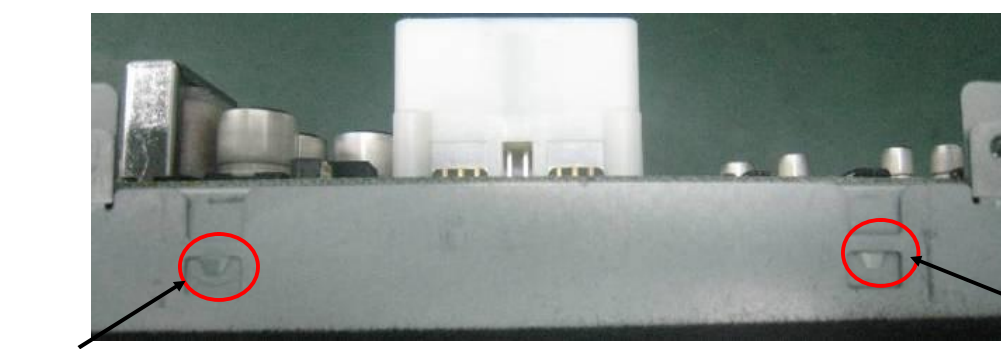
- | Process  | Management focus  |
|--|---|
| 1 Please unlock the 4 screws on the back cover of front monitor(A) according with the picture 1 and picture 2. | Torque is 2.0 ± 0.1Kg * CM. And the unlock sequence is ①、②、③、④.                           |
| 2 Unlock the back cover of A.  | Note: Please pull up the back cover vertically.   |
| 3 Unlock the front cover of A. And the balance is the panel parts. Please see it as picture 3.                 | Please use the nipper to prize up the 8 snaplock in the side of front cover as picture 3. |
| 4 Please remove the transparent plastic cover and the 4 regulas on the side of panel.                          |   |
| 5 Please unlock the 4 screws in the PCBA of panel parts as picture 4.  | Torque is 2.0±0.1Kg*CM. And the unlock sequence is ⑤、⑥、⑦、⑧.                               |



Picture 1



Picture 2



Picture 3

snapl ock

snaplock

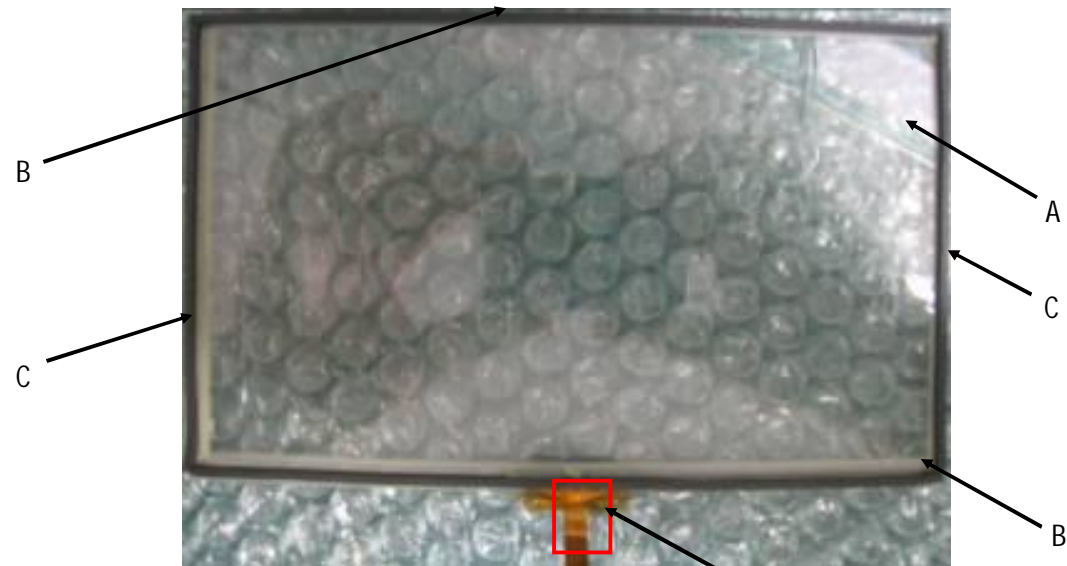


Picture 4

| Used parts                                    | Qua. | Used parts           | Qua. | Used fixtures | Used production technology base | Time  | Place | Content     |          |  |           |  |  |
|---|------|----------------------|------|---------------|---------------------------------|-------|-------|-------------|----------|--|-----------|--|--|
| A the monitor from customer                   | 1    | K                    |      |               |                                 |       |       |             |          |  |           |  |  |
| B   |      | L                    |      |               |                                 |       |       |             |          |  |           |  |  |
| C   |      | M                    |      |               |                                 |       |       |             |          |  |           |  |  |
| E   |      | N                    |      |               |                                 |       |       |             |          |  |           |  |  |
| F   |      | O                    |      | Used tool     |                                 | Sign  | Time  | Revision    |          |  |           |  |  |
|   |      | P                    |      | Nipper        | 2.0±0.1Kg*CM                    | 4     |       |             |          |  |           |  |  |
| G   |      |                      |      | Driver        | 4*40*4.0*1#                     | 3     |       |             |          |  |           |  |  |
| H   |      | Auxiliary materials  |      | Driver        |                                 | 2     |       |             |          |  |           |  |  |
| I   |      |                      |      | Driver        |                                 | 1     |       |             |          |  |           |  |  |
| J   |      |                      |      |               |                                 |       |       |             | Reviewer |  | Make time |  |  |
| Operation name<br>ASSY#1 back and front cover |      | Model name<br>Murano |      |               |                                 | Maker |       | Approved by |          |  |           |  |  |

### Standard Operating Procedure(SOP)

| Process Flow Diagrams                            | Item | Processes  | Management focus   |
|--|------|--|--|
| Mark "B": Special characteristics of the project | 1    | Please expose the edge of protective film of touch panel (A) to bare silver wire, and stick the regula 1(B) and regula 2(C) to A as picture 1. | The FFC must be placed face up, and stick B firstly, then stick C.             |
|  | 2    | Put the TOUCH PANEL (A) in install kit (D) as picture 2.   | The FFC must be placed face up. A must be placed completely and not have tilt. |



Picture 1

4PIN FFC be placed face up



Picture 2

4PIN FFC be placed face up

| Used parts                                | Qua. | Used parts           | Qua. | Used fixtures | Used production technology base |      | Time  | Place    | Content     |           |             |       |          |
|---|------|----------------------|------|---------------|---------------------------------|------|-------|----------|-------------|-----------|-------------|-------|----------|
|   |      |                      |      |               | Sign                            | Time |       |          | Revision    | Time      | ECN NO      | Maker | Reviewer |
| A TOUCH PANEL7"                           | 1    | K                    |      |               |                                 |      |       |          |             |           |             |       |          |
| B PORON regula 1                          | 1    | L                    |      |               |                                 |      |       |          |             |           |             |       |          |
| C PORON regula 2                          | 1    | M                    |      |               |                                 |      |       |          |             |           |             |       |          |
| D TOUCH install kit                       | 1    | N                    |      | Used tool     |                                 |      |       |          |             |           |             |       |          |
| E   |      | O                    |      |               |                                 | 4    |       |          |             |           |             |       |          |
| F   |      | P                    |      |               |                                 | 3    |       |          |             |           |             |       |          |
| G   |      | Auxiliary materials  |      |               |                                 | 2    |       |          |             |           |             |       |          |
| H   |      |                      |      |               |                                 | 1    |       |          |             |           |             |       |          |
| J   |      |                      |      |               |                                 |      | Maker | Reviewer | Approved by | Make time |             |       |          |
| Operation name<br>ASSY#2 Stick the regula |      | Model name<br>Murano |      |               |                                 |      |       |          |             | No.       | P150-077-02 |       |          |

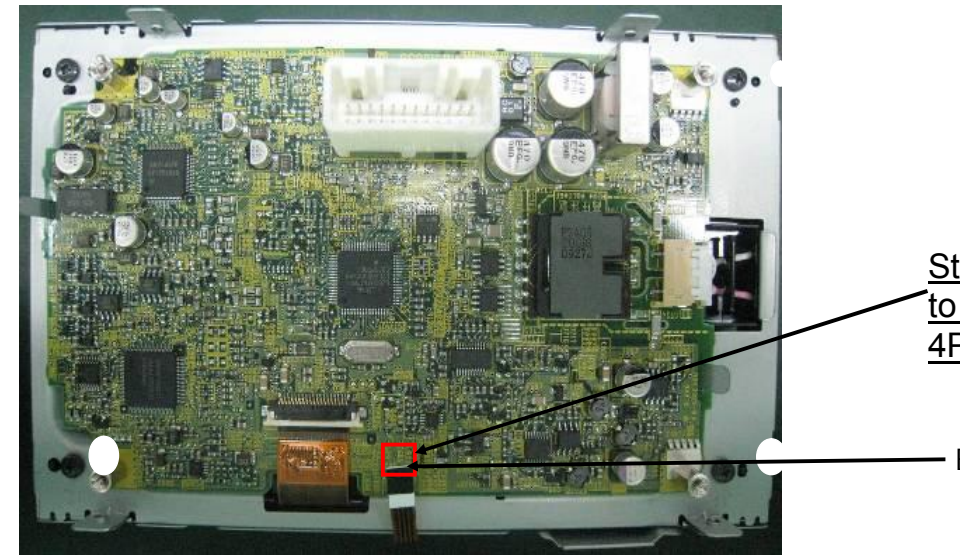
### Standard Operating Procedure(SOP)

| Process Flow Diagrams                            | Item | Processes   | Management focus                                      |
|--|------|---|---|
| Mark "B": Special characteristics of the project | 1    | Uncover the protective film in ASSY # 2 (A) ,and put it to the front cover, then use roller to clean the surface of A as picture 1. |   |
|  | 2    | use roller to clean the panel and put it on A as picture 2.   | The FFC in panel is the same direction with 4PIN FFC. |
|  | 3    | Stick the lockwasher(B) in the back of 4PIN FFC.  |   |



Picture 1

The 4PIN FFC must be placed face up



Picture 2

| Used parts  | Qua. | Used parts                  | Qua. | Used fixtures | Used production technology base | A<br>n<br>o<br>m<br>a<br>l<br>i<br>e<br>s | Time  | Place    | Content     |           |        |       |             |
|---|------|-----------------------------|------|---------------|---------------------------------|---|-------|----------|-------------|-----------|--------|-------|-------------|
| A ASSY#2  | 1    | K                           |      |               |                                 |   |       |          |             |           |        |       |             |
| B FFC lockwasher  | 1    | L                           |      |               |                                 |   |       |          |             |           |        |       |             |
| C   |      | M                           |      |               |                                 |   |       |          |             |           |        |       |             |
| E   |      | N                           |      | Used tool     |                                 |   | Sign  | Time     | Revision    | Time      | ECN NO | Maker | Reviewer    |
| F   |      | O                           |      | clean roller  |                                 |   | 4     |          |             |           |        |       |             |
| G   |      | P                           |      |               |                                 |   | 3     |          |             |           |        |       |             |
| H   |      | Auxiliary materials         |      |               |                                 |   | 2     |          |             |           |        |       |             |
| I   |      |                             |      |               |                                 |   | 1     |          |             |           |        |       |             |
| J   |      |                             |      |               |                                 |   | Maker | Reviewer | Approved by | Make time |        |       |             |
| <b>Operation name</b><br>ASSY#3 install touch and panel |      | <b>Model name</b><br>Murano |      |               |                                 |   |       |          |             |           |        |       | P150-077-03 |



### Standard Operating Procedure(SOP)

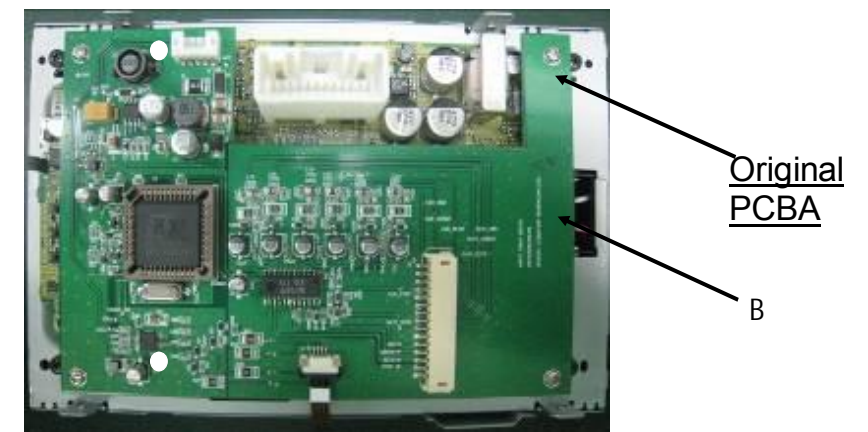
| Process Flow Diagrams                            | Item | Processes  | Management focus   |
|--|------|--|--|
| Mark "B": Special characteristics of the project | 1    | Stick the protective film on the panel as picture 1.                                 | Note: Can not occur air bladder.   |
|  | 2    | Use Hexagon Copper Cylinder screw(A) to fix PCBA as picture 2.                       | Torque is 2.0±0.1Kg*CM. And the unlock sequence is ①、②、③、④.  |
|  | 3    | Put the PCBA DB(B) on the PCBA of panel parts, and insert the 4PIN FFC as picture 3. | The gap of PCBA B must corresponds to the original PCBA's 24PIN socket. Then check the FFC is ok after inserted. |



Picture 1




Picture 2



Picture 3

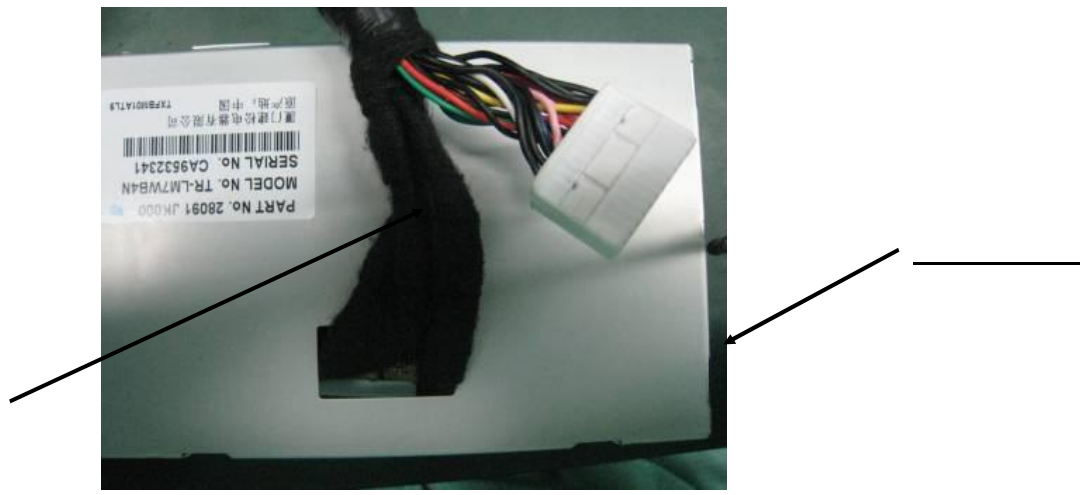
| Used parts   | Qua. | Used parts  | Qua. | Used fixtures              | Used production technology base | A n o m a l i e s |          | Time        | Place | Content   |             |       |          |
|--|------|---|------|----------------------------|---------------------------------|-------------------|----------|-------------|-------|-----------|-------------|-------|----------|
| A Hexagon Copper Cylinder screw                                  | 4    | K   |      | Stick film fixture         |                                 |                   |          |             |       |           |             |       |          |
| B PCBA DB  | 1    | L   |      |                            |                                 |                   |          |             |       |           |             |       |          |
| C  |      | M   |      |                            |                                 |                   |          |             |       |           |             |       |          |
| E  |      | N   |      | Used tool                  |                                 | Sign              | Time     | Revision    |       | Time      | ECN NO      | Maker | Reviewer |
| F  |      | O   |      | Driver                     | 2.0±0.1Kg*CM                    | 4                 |          |             |       |           |             |       |          |
| G  |      | P   |      | Hexagon screw locking tool |                                 | 3                 |          |             |       |           |             |       |          |
| H  |      | Auxiliary materials<br>117mm*100m protective film |      |                            |                                 | 2                 |          |             |       |           |             |       |          |
| I  |      |   |      |                            |                                 | 1                 |          |             |       |           |             |       |          |
| J  |      |   |      |                            |                                 | Maker             | Reviewer | Approved by |       | Make time |             |       |          |
| <b>Operation name</b><br>ASSY#4 Stick protective film and insert |      | <b>Model name</b><br>P150-077-04                  |      |                            |                                 |                   |          |             |       | No.       | P150-077-04 |       |          |

### Standard Operating Procedure(SOP)

| Process Flow Diagrams  | Item | Processes   | Management focus  |
|--|------|---|---|
|  | 1    | Please lock the M2.5 * 4 Cross recessed head screws (A) according with picture 1.           | Torque is 2.0±0.1Kg*CM. And the unlock sequence is ①、②、③、④. |
|  | 2    | Put the 5PIN and 15PIN connector of Murano wire(B) across from the back cover as picture 2. | Do not scratch B.   |



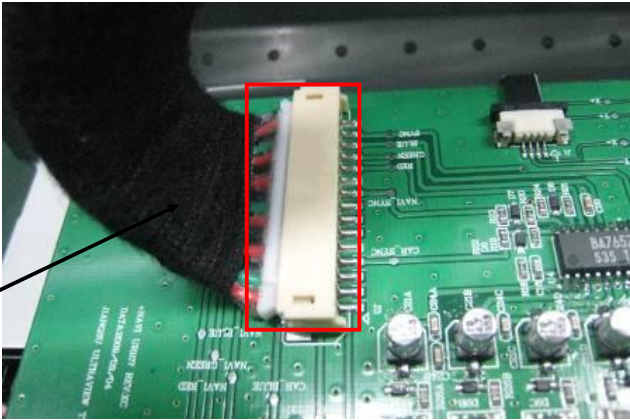
Picture 1



Picture 2

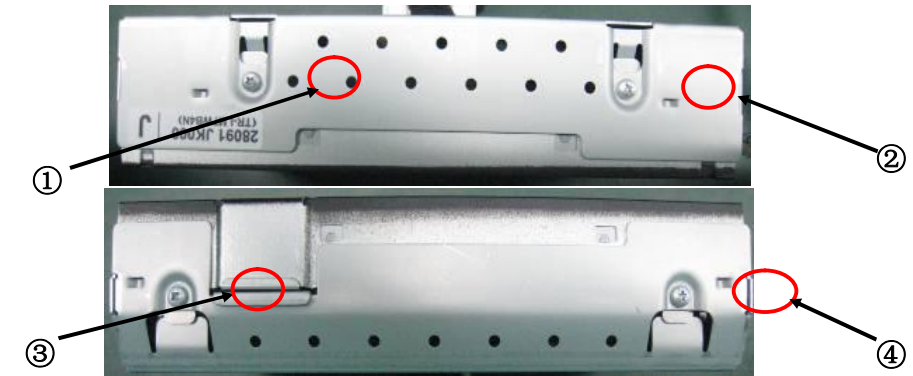
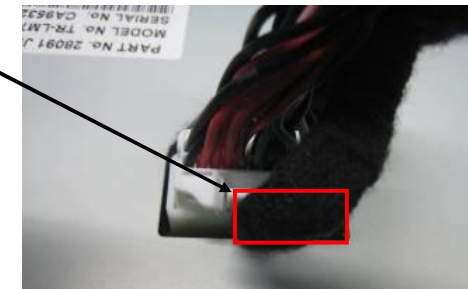
| Used parts                                 | Qua. | Used parts                  | Qua. | Used fixtures       | Used production technology base | A<br>n<br>o<br>m<br>a<br>l<br>i<br>e<br>s | Time | Place    | Content |          |             |           |  |
|--|------|-----------------------------|------|---------------------|---------------------------------|---|------|----------|---------|----------|-------------|-----------|--|
| <b>A</b> M2.5*4 Cross recessed head screws | 4    | <b>K</b>                    |      |                     |                                 | A<br>n<br>o<br>m<br>a<br>l<br>i<br>e<br>s |      |          |         |          |             |           |  |
| <b>B</b> Murano wire                       | 1    | <b>L</b>                    |      |                     |                                 |   |      |          |         |          |             |           |  |
| <b>C</b>                                   |      | <b>M</b>                    |      |                     |                                 |   |      |          |         |          |             |           |  |
| <b>E</b>                                   |      | <b>N</b>                    |      | Used tool           |                                 | Sign                                      | Time | Revision | Time    | ECN NO   | Maker       | Reviewer  |  |
| <b>F</b>                                   |      | <b>O</b>                    |      | Driver              | 2.0±0.1Kg*CM                    | 4   |      |          |         |          |             |           |  |
| <b>G</b>                                   |      | <b>P</b>                    |      | Drivertool diameter | 4*40*4.0*1#                     | 3   |      |          |         |          |             |           |  |
| <b>H</b>                                   |      | Auxiliary materials         |      | Ion hair dryer      |                                 | 2   |      |          |         |          |             |           |  |
| <b>I</b>                                   |      |                             |      |                     |                                 |   | 1    |          |         |          |             |           |  |
| <b>J</b>                                   |      |                             |      |                     |                                 |   |      |          | Maker   | Reviewer | Approved by | Make time |  |
| <b>Operation name</b><br>ASSY#5 Lock DB    |      | <b>Model name</b><br>Murano |      |                     |                                 |   |      |          |         | No.      | P150-077-05 |           |  |

### Standard Operating Procedure(SOP)

| Process Flow Diagrams   | Item | Processes  | Management focus  |
|---|------|--|---|
| Mark "B": Special characteristics of the project<br><br> <p style="text-align: center;">Picture 1</p> | 1    | Connect the 15PIN connector of wire to 15PIN connector of DB as picture 1.                           | Pressing hard in order to check it is OK or not.  |
|   | 2    | Connect the 5PIN connector of wire to 5PIN connector of DB as picture 2.                             | Pressing hard in order to check it is OK or not.  |
|   | 3    | Cover the back cover, and connect the 24PIN connector of wire to 24PIN connector of DB as picture 3. | Please note the back cover's matching and the position of 5PIN and 15PIN wire.          |
|   | 4    | Please lock the screws which unlocked from the back cover as picture 4.                              | Torque is $2.0 \pm 0.1 \text{Kg} \cdot \text{CM}$ . And the unlock sequence is ①、②、③、④. |

5PIN connector must be in the right of 24PIN connector.

15PIN connector must be in the back of 24PIN connector.



| A                          | Used parts | Qua. | Used parts          | Qua. | Used fixtures       | Used production technology base         |          | Anomalies   | Time | Place     | Content  |             |        |       |          |  |
|----------------------------|------------|------|---------------------|------|---------------------|---|----------|-------------|------|-----------|----------|-------------|--------|-------|----------|--|
|                            |            |      |                     |      |                     | Sign                                    | Time     |             |      |           | Revision | Time        | ECN NO | Maker | Reviewer |  |
| B                          |            |      | K                   |      |                     |   |          |             |      |           |          |             |        |       |          |  |
| C                          |            |      | L                   |      |                     |   |          |             |      |           |          |             |        |       |          |  |
| E                          |            |      | M                   |      |                     |   |          |             |      |           |          |             |        |       |          |  |
| F                          |            |      | N                   |      | Used tool           |   |          |             |      |           |          |             |        |       |          |  |
| G                          |            |      | O                   |      | Driver              | $2.0 \pm 0.1 \text{Kg} \cdot \text{CM}$ | 4        |             |      |           |          |             |        |       |          |  |
| H                          |            |      | P                   |      | Drivertool diameter | 4*40*4.0*1#                             | 3        |             |      |           |          |             |        |       |          |  |
| I                          |            |      | Auxiliary materials |      | Ion hair dryer      |   | 2        |             |      |           |          |             |        |       |          |  |
| J                          |            |      | Work Order code     |      |                     |   | 1        |             |      |           |          |             |        |       |          |  |
|                            |            |      |                     |      |                     | Maker                                   | Reviewer | Approved by |      | Make time |          |             |        |       |          |  |
| Operation name             |            |      | Model name          |      |                     |   |          |             |      | No.       |          | P150-077-06 |        |       |          |  |
| ASSY#6 Lock the back cover |            |      | Murano              |      |                     |   |          |             |      |           |          |             |        |       |          |  |